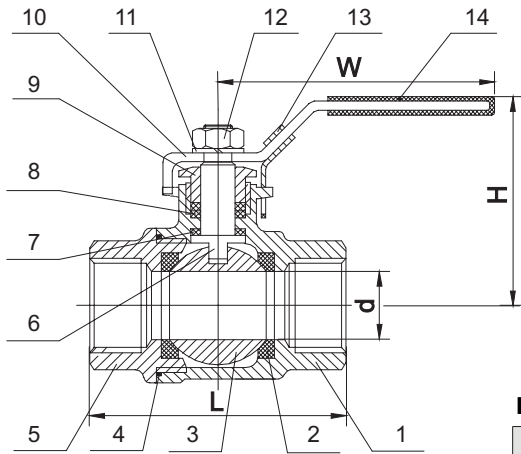
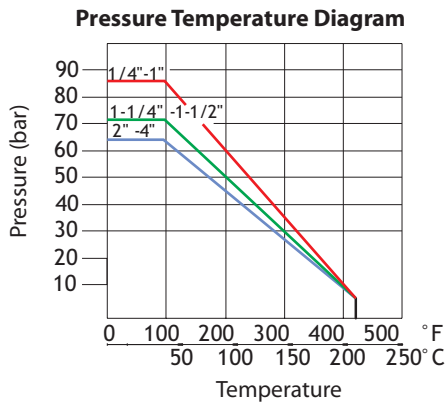


## V201 Series, 2Pc Body, AISI316, BSP Threaded End, Full Bore Ball Valves



**DIN**  
DIN3202-M3  
Face to Face



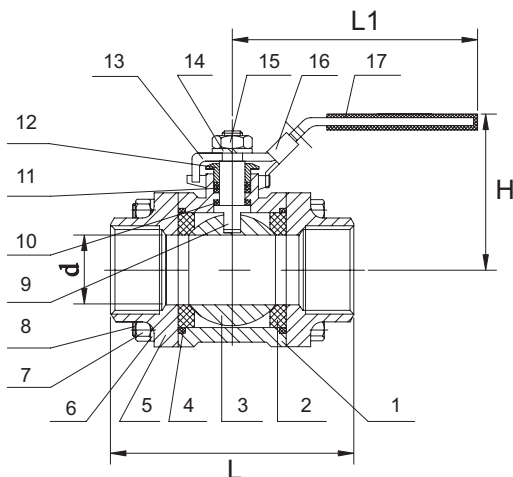
### Dimensions (mm)

| Size (DN) | d    | L   | H   | L1  | Weight (Kg) |
|-----------|------|-----|-----|-----|-------------|
| 1/4"      | 11   | 50  | 50  | 100 | 0,22        |
| 3/8"      | 12,5 | 60  | 50  | 100 | 0,30        |
| 1/2"      | 15   | 75  | 52  | 100 | 0,34        |
| 3/4"      | 20   | 80  | 57  | 115 | 0,52        |
| 1"        | 25   | 90  | 78  | 150 | 0,78        |
| 1-1/4"    | 32   | 110 | 88  | 150 | 1,23        |
| 1-1/2"    | 40   | 120 | 95  | 180 | 2,00        |
| 2"        | 50   | 140 | 100 | 180 | 2,98        |
| 2-1/2"    | 65   | 185 | 120 | 254 | 6,05        |
| 3"        | 80   | 205 | 130 | 254 | 9,90        |
| 4"        | 100  | 240 | 160 | 285 | 16,60       |

### Material List

| No | Part Name      | Material | Qty |
|----|----------------|----------|-----|
| 1  | Body           | CF8M     | 1   |
| 2  | Ball Seat      | PTFE     | 2   |
| 3  | Ball           | AISI316  | 1   |
| 4  | Body Gasket    | PTFE     | 1   |
| 5  | Cap            | CF8M     | 1   |
| 6  | Stem           | AISI316  | 1   |
| 7  | Thrust Washer  | PTFE     | 1   |
| 8  | Stem Packing   | PTFE     | 1   |
| 9  | Gland Nut      | AISI304  | 1   |
| 10 | Handle         | AISI304  | 1   |
| 11 | Spring Washer  | AISI304  | 1   |
| 12 | Nut            | AISI304  | 1   |
| 13 | Locking Device | AISI304  | 1   |
| 14 | Handle Cover   | Plastic  | 1   |

## V202 Series, 3Pcs Body, AISI316, BSP Threaded End, Full Bore Ball Valves



**DIN**  
DIN3202-M3  
Face to Face

### Dimensions (mm)

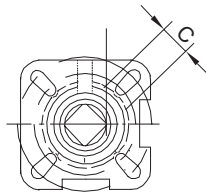
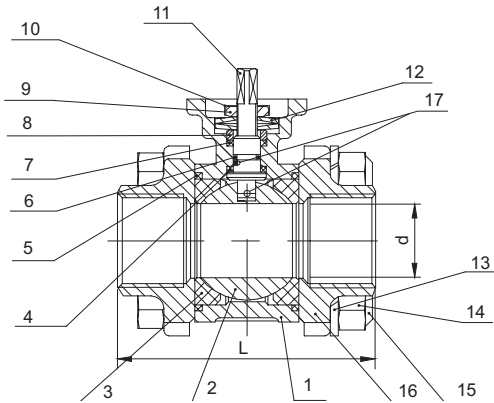
| Size (DN) | d    | L   | H   | L1  | Torque (N.m) | Weight (Kg) |
|-----------|------|-----|-----|-----|--------------|-------------|
| 1/4"      | 11   | 50  | 51  | 105 | 4            | 0,40        |
| 3/8"      | 12,5 | 60  | 51  | 105 | 4            | 0,42        |
| 1/2"      | 15   | 75  | 53  | 118 | 5            | 0,45        |
| 3/4"      | 20   | 80  | 60  | 118 | 8            | 0,73        |
| 1"        | 25   | 90  | 75  | 150 | 10           | 1,04        |
| 1-1/4"    | 32   | 110 | 80  | 150 | 14           | 1,65        |
| 1-1/2"    | 40   | 120 | 88  | 182 | 18           | 2,25        |
| 2"        | 50   | 140 | 95  | 182 | 25           | 3,15        |
| 2-1/2"    | 65   | 185 | 121 | 254 | 48           | 6,50        |
| 3"        | 80   | 205 | 135 | 254 | 75           | 9,60        |
| 4"        | 100  | 240 | 158 | 285 | 110          | 16,40       |

### Material List

| No | Part Name      | Material | Qty        |
|----|----------------|----------|------------|
| 1  | Body           | AISI316  | 1          |
| 2  | Ball Seat      | PTFE     | 2          |
| 3  | Ball           | AISI316  | 1          |
| 4  | Body Gasket    | PTFE     | 2          |
| 5  | Cap            | AISI116  | 2          |
| 6  | Washer         | AISI304  | 4 (Max 12) |
| 7  | Nut            | AISI304  | 4 (Max 12) |
| 8  | Stud           | AISI304  | 4 (Max 6)  |
| 9  | Stem           | AISI316  | 1          |
| 10 | Thrust Washer  | PTFE     | 1          |
| 11 | Stem Packing   | PTFE     | 1          |
| 12 | Gland Nut      | AISI304  | 1          |
| 13 | Lever          | AISI304  | 1          |
| 14 | Spring Washer  | AISI304  | 1          |
| 15 | Nut            | AISI304  | 1          |
| 16 | Locking Device | AISI304  | 1          |
| 17 | Handle Cover   | Plastic  | 1          |



## V203 Series, Direct Mount Pad, AISI316, BSP Threaded End, Full Bore Ball Valves



ISO5211



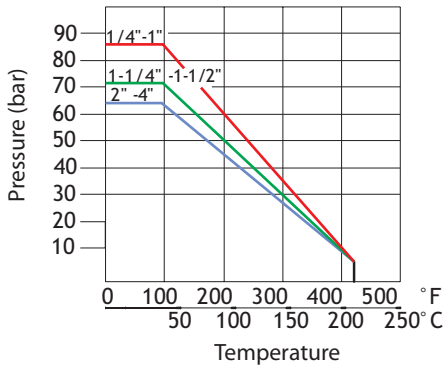
### Material List

| No | Part Name          | Material | Qty        |
|----|--------------------|----------|------------|
| 1  | Body               | AISI316  | 1          |
| 2  | Ball               | AISI316  | 1          |
| 3  | Ball Seat          | PTFE     | 2          |
| 4  | Thrust Washer      | PTFE     | 1          |
| 5  | Body Gasket        | PTFE     | 2          |
| 6  | O-Ring             | Viton    | 1          |
| 7  | Stem Packing       | PTFE     | 1          |
| 8  | Gland Nut          | AISI304  | 1          |
| 9  | Nut                | AISI304  | 1          |
| 10 | Locking Washer     | AISI304  | 1          |
| 11 | Stem               | AISI316  | 1          |
| 12 | Belleville Washer  | AISI301  | 2          |
| 13 | Washer             | AISI304  | 4 (Max 12) |
| 14 | Nut                | AISI304  | 4 (Max 12) |
| 15 | Stud               | AISI304  | 4 (Max 6)  |
| 16 | Cap                | AISI316  | 2          |
| 17 | Anti-Static Device | AISI316  | 2          |

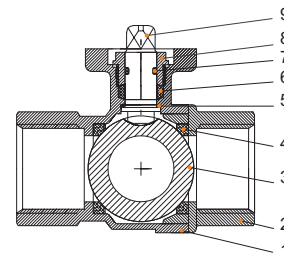
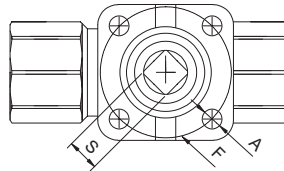
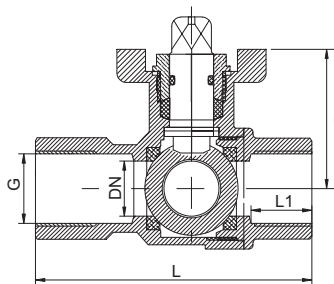
### Dimensions (mm)

| Size (DN) | d    | L   | C  | ISO5211 Top Flange | Torque (N.m) | Weight (Kg) |
|-----------|------|-----|----|--------------------|--------------|-------------|
| 1/4"      | 11   | 50  | 9  | F03                | 4            | 0,46        |
| 3/8"      | 12,5 | 60  | 9  | F03                | 4            | 0,48        |
| 1/2"      | 15   | 75  | 9  | F03                | 5            | 0,51        |
| 3/4"      | 20   | 80  | 11 | F04/F05            | 8            | 0,89        |
| 1"        | 25   | 90  | 11 | F04/F05            | 10           | 1,27        |
| 1-1/4"    | 32   | 110 | 14 | F05/F07            | 14           | 2,04        |
| 1-1/2"    | 40   | 120 | 14 | F05/F07            | 18           | 3,00        |
| 2"        | 50   | 140 | 14 | F05/F07            | 25           | 3,80        |
| 2-1/2"    | 65   | 185 | 17 | F07/F10            | 48           | 7,80        |
| 3"        | 80   | 205 | 17 | F07/F10            | 75           | 12,40       |
| 4"        | 100  | 240 | 17 | F07/F10            | 110          | 20,80       |

### Pressure Temperature Diagram



## V204 Series, Direct Mount Pad, Brass, BSP Threaded End, Full Bore Ball Valves



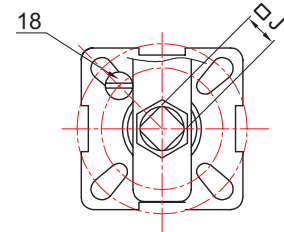
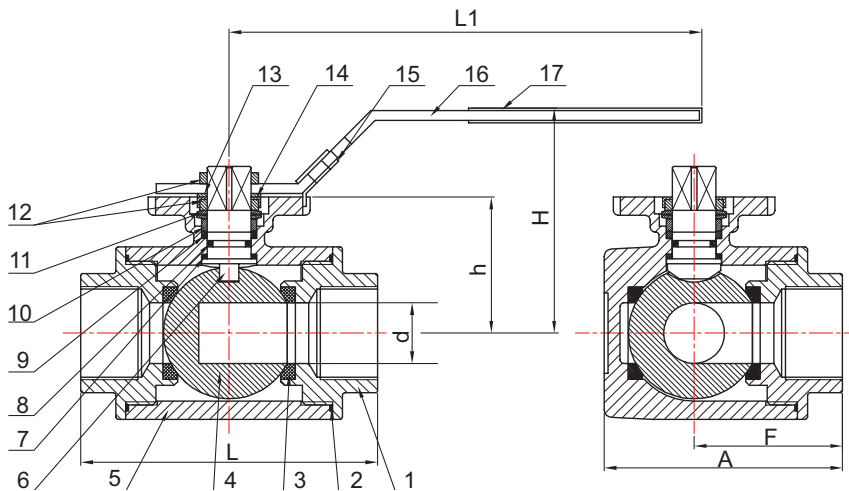
### Material List

| No | Part Name     | Material              | Qty |
|----|---------------|-----------------------|-----|
| 1  | Body          | Brass (Nickel Plated) | 1   |
| 2  | Cap           | Brass (Nickel Plated) | 1   |
| 3  | Ball          | Brass (Nickel Plated) | 1   |
| 4  | Ball Seat     | PTFE                  | 2   |
| 5  | Thrust Washer | PTFE                  | 1   |
| 6  | Stem Packing  | EPDM                  | 1   |
| 7  | O-Ring        | NBR                   | 1   |
| 8  | Gland Nut     | Brass                 | 1   |
| 9  | Stem          | Brass                 | 1   |

### Dimensions (mm)

| Size (DN)   | 15   | 20   | 25   | 32     | 40     | 50   | 65     | 80   | 100  |
|-------------|------|------|------|--------|--------|------|--------|------|------|
| G           | 1/2" | 3/4" | 1"   | 1-1/4" | 1-1/2" | 2"   | 2-2/2" | 3"   | 4"   |
| L           | 75   | 80   | 90   | 112    | 127    | 142  | 161    | 185  | 215  |
| L1          | 16,5 | 18,5 | 22   | 30     | 30     | 32   | 32     | 34   | 36   |
| H           | 38   | 40   | 45   | 55     | 61     | 72,5 | 82,5   | 95   | 110  |
| A           | 5,5  | 5,5  | 5,5  | 5,5    | 6,7    | 6,7  | 6,7    | 9    | 9    |
| F           | F03  | F03  | F03  | F05    | F05    | F05  | F07    | F07  | F07  |
| S           | 9    | 9    | 9    | 11     | 11     | 14   | 14     | 14   | 17   |
| Weight (Kg) | 0,33 | 0,45 | 0,65 | 1,10   | 1,50   | 2,30 | 3,25   | 5,60 | 9,40 |

## V207 L / V208 T Port , Direct Mount Pad, BSP Threaded End 3 Way Ball Valves

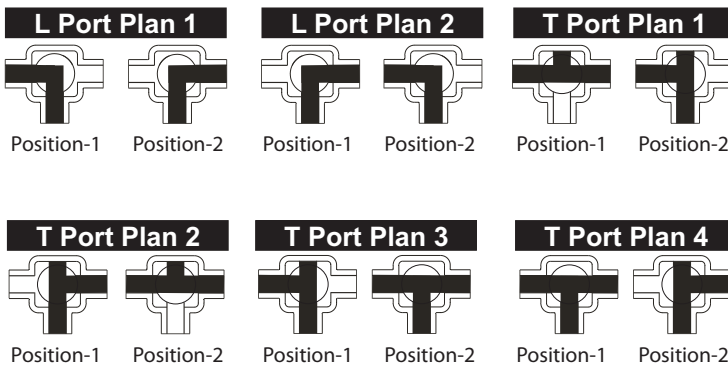


ISO5211 Top Flange

### Material List

| No | Description       | Material | Quantity |
|----|-------------------|----------|----------|
| 1  | Cap               | AISI316  | 3        |
| 2  | Body Gasket       | PTFE     | 3        |
| 3  | Ball Seat         | PTFE     | 4        |
| 4  | Ball              | AISI316  | 1        |
| 5  | Body              | AISI316  | 2        |
| 6  | Stem              | AISI316  | 1        |
| 7  | Thrust Washer     | PTFE     | 1        |
| 8  | O-Ring            | Viton    | 1        |
| 9  | Stem Packing      | PTFE     | 1        |
| 10 | Gland Nut         | AISI316  | 1        |
| 11 | Belleville Washer | AISI301  | 1        |
| 12 | Nut               | AISI304  | 1        |
| 13 | Washer            | AISI301  | 1        |
| 14 | Locking Washer    | AISI304  | 1        |
| 15 | Locking Device    | AISI304  | 1        |
| 16 | Handle            | AISI116  | 1        |
| 17 | Handle Cover      | Plastic  | 1        |
| 18 | Stop Pin          | AISI304  | 1        |

### Port Plan



### Dimensions (mm)

| Size (DN) | d   | L   | H   | H1  | F    | A     | J  | ISO5211 Top Flange | Torque (N.m) | Weight (Kg) |
|-----------|-----|-----|-----|-----|------|-------|----|--------------------|--------------|-------------|
| 1/4"      | 9,5 | 75  | 66  | 130 | 37,5 | 57,5  | 9  | F03/F04            | 8            | 0,70        |
| 3/8"      | 11  | 75  | 66  | 130 | 37,5 | 57,5  | 9  | F03/F04            | 8            | 0,67        |
| 1/2"      | 12  | 75  | 66  | 130 | 37,5 | 57,5  | 9  | F03/F04            | 8            | 0,73        |
| 3/4"      | 15  | 85  | 72  | 161 | 42,5 | 65,5  | 11 | F04/F05            | 9            | 0,94        |
| 1"        | 20  | 100 | 77  | 161 | 50   | 79    | 11 | F04/F05            | 15           | 1,38        |
| 1-1/4"    | 25  | 122 | 92  | 203 | 61   | 97    | 14 | F05/F07            | 20           | 2,89        |
| 1-1/2"    | 32  | 131 | 96  | 203 | 65,5 | 106,5 | 14 | F05/F07            | 30           | 3,60        |
| 2"        | 40  | 158 | 107 | 203 | 79   | 129   | 14 | F05/F07            | 45           | 6,21        |
| 2-1/2"    | 49  | 178 | 185 | 254 | 89   | 145   | 17 | F07/F10            | 50           | 8,72        |
| 3"        | 69  | 202 | 147 | 254 | 101  | 167   | 17 | F07/F10            | 80           | 12,81       |
| 4"        | 75  | 246 | 169 | 310 | 123  | 205   | 17 | F07/F10            | 110          | 21,60       |



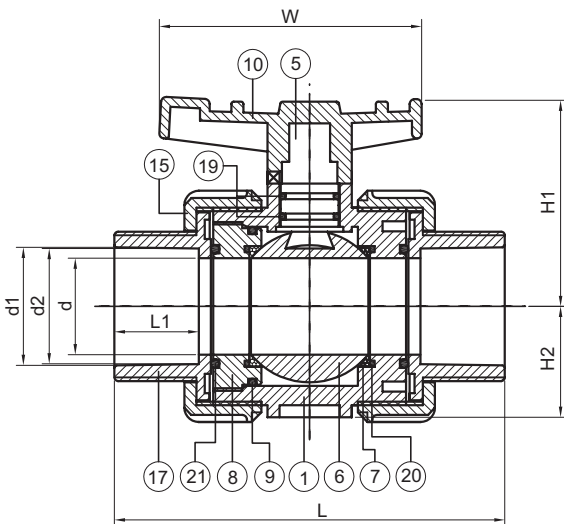
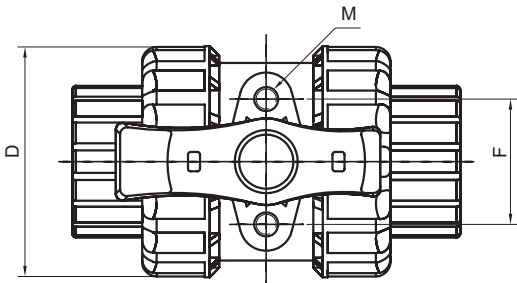
Pneumatic Act.  
Op. 3 Way Ball  
Valve



## V209 Series Socket Fusion U-PVC Ball Valves

PROVAL V209 Series U-PVC ball valves are designed for use from basic water applications to corrosive chemical applications where UPVC resists.

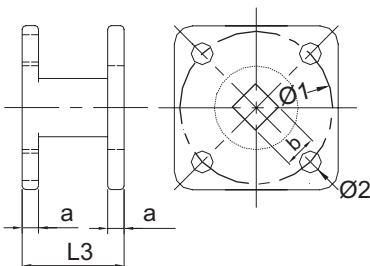
V209 series U-PVC ball valves are easy to mount actuators with their ISO5211 direct mount pad kits.



### Dimensions (mm)

| Size Inch/DN | d  | d1   | d2   | D   | L   | L1   | W     | H1  | H2   | F  | M  |
|--------------|----|------|------|-----|-----|------|-------|-----|------|----|----|
| 1/2" (15)    | 15 | 20,3 | 20,1 | 53  | 104 | 22,5 | 65,8  | 49  | 24,5 | 31 | M6 |
| 3/4" (20)    | 20 | 25,3 | 25,1 | 61  | 115 | 26   | 78,6  | 60  | 29,5 | 33 | M6 |
| 1" (25)      | 25 | 32,3 | 32,1 | 71  | 131 | 30   | 86,7  | 68  | 34   | 40 | M6 |
| 1 1/4" (32)  | 32 | 40,3 | 40,1 | 83  | 147 | 32   | 97,4  | 76  | 38   | 52 | M6 |
| 1 1/2" (40)  | 40 | 50,3 | 50,1 | 96  | 164 | 35   | 108,6 | 85  | 45   | 52 | M8 |
| 2" (50)      | 50 | 63,3 | 63,1 | 116 | 210 | 40   | 132   | 97  | 55   | 70 | M8 |
| 2 1/2" (65)  | 65 | 75,3 | 75,1 | 150 | 240 | 46   | 150   | 180 | 70   | 83 | M8 |

### Bracet & Couping Dimensions (mm) Dimensions (mm)



| Size Inch/DN | b  | ISO 5211 | Ø2    | a   | L3 | Torque (Nm) |
|--------------|----|----------|-------|-----|----|-------------|
| 1/2" (15)    | 9  | F04      | 6     | 4,5 | 28 | 15          |
| 3/4" (20)    | 9  | F04      | 6     | 4,5 | 28 | 21          |
| 1" (25)      | 11 | F04-F05  | 7     | 5   | 50 | 24          |
| 1 1/4" (32)  | 11 | F04-F05  | 7     | 5   | 50 | 33          |
| 1 1/2" (40)  | 11 | F05      | 8     | 6   | 50 | 40          |
| 2" (50)      | 11 | F05      | 8     | 6   | 50 | 52          |
| 2 1/2" (65)  | 17 | F07-F10  | 10-12 | 6   | 70 | 90          |

Notes: Given torque figures are for liquid application at ambient temperature conditions.

### Technical Specifications,

- Fusion bonded ends
- Full bore design
- Max working pressure 10 bar
- EPDM/Viton alternative seal materials
- Direct actuator mounting st. steel bracket & couplings
- Integrated handle to adjust/remove the union bushings



### Material List

| No | Part Name          | Qty | Water Type | Acid Type |
|----|--------------------|-----|------------|-----------|
| 1  | Body               | 1   | UPVC       | UPVC      |
| 5  | Stem               | 1   | UPVC       | UPVC      |
| 6  | Ball               | 1   | UPVC       | UPVC      |
| 7  | Ball Seat          | 2   | PTFE       | PTFE      |
| 8  | Threaded Spacer    | 1   | UPVC       | UPVC      |
| 10 | Lever              | 1   | ABS        | ABS       |
| 15 | Union Nut          | 2   | UPVC       | UPVC      |
| 17 | Union End          | 2   | UPVC       | UPVC      |
| 19 | Stem O-Ring        | 2   | EPDM       | VITON     |
| 9  | Spacer Seal        | 1   | EPDM       | VITON     |
| 20 | End Seal           | 2   | EPDM       | VITON     |
| 21 | Spacer Seal        | 2   | EPDM       | VITON     |
| 22 | Bracket & Coupling | 1   | SS304      | SS304     |



Pneumatic Act. Op.  
PVC Ball Valve



Electric Act. Op.  
PVC Ball Valve



ISO5211 Direct Mount  
Pad PVC Ball Valve